

Pipe Clamp Expertise

Eckermann products. Quality meets precision.



Pipe clamps – reliable support for every connection

Whether in industry, craftsmanship, or plant engineering – secure and durable pipe fastening is a key factor for quality and operational safety.

With Eckermann pipe clamps, you choose products that meet the highest requirements in terms of material, stability, and manufacturing quality.

Developed with advanced engineering and produced according to strict quality standards, they provide a reliable and durable solution for a wide range of applications.

Discover our product range on the following pages.

Pipe clamp brackets (DIN 3567)

Pipe clamp brackets – Form A
DIN 3567, plain / galvanized (2-piece),
with rounded edges
Page 4-5



Pipe clamp brackets – Form A
Stainless steel (2-piece),
with straight edges
Page 6

Pipe clamp brackets – Form A
Factory standard Bayer-8250,
Steel or stainless steel (2-piece),
with straight edges
Page 7-8



Pipe clamp brackets – factory standards

Pipe clamp brackets – Form A
Factory standard BASF-1290, Hoechst
Steel or stainless steel (1-piece),
with straight edges
Page 9-10

Pipe clamp brackets – Form B
Factory standard Bayer-8250
Steel (1-piece)
with straight edges
Page 11



Pipe clamp brackets – Form C
Factory standard Bayer
Steel or stainless steel (1-teilig),
with straight edges
Page 12-15



Notes
Technical Information
Page 16



Notes
For custom dimensions, articles,
or project-specific information
Page 17-18

Pipe clamp brackets DIN 3567 Form A

Plain / galvanized (2-piece),
with rounded edges



Cold-formed, two-piece pipe clamps made of S235JR steel – proven for more than 130 years. Precisely designed for machine screws according to DIN 601 and clearly marked dimensions. Excellent corrosion protection through hot-dip galvanizing.

NW 15 to NW 40 (DN) are packed (PU) in cartons of 50 pipe clamps each.
Special packaging solutions are generally available depending on quantity and dimensions.

DN Nominal Size	Diameter Ø in mm	Hole Spacing a	Edge Distance c	Bore Hole d1	Material mm	Order Number	
						Plain	Galvanized
15	21.3	58	15	11.5	30 x 5	23102	23136
20	26.9	64	15	11.5	30 x 5	23104	23138
25	33.7	72	15	11.5	30 x 5	23106	23140
32	42.4	82	15	11.5	30 x 5	23108	23142
40	48.3	88	15	11.5	30 x 5	23110	23144

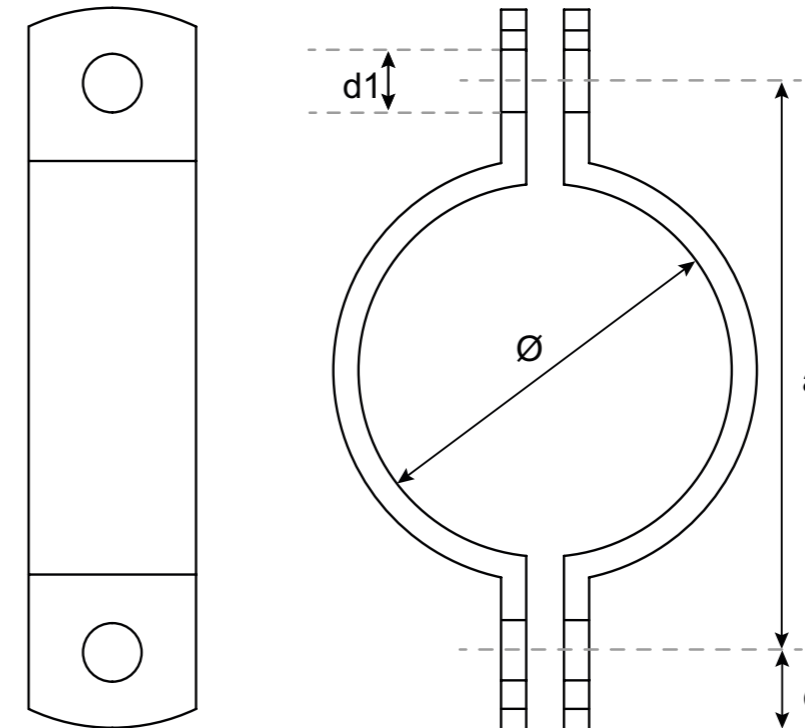
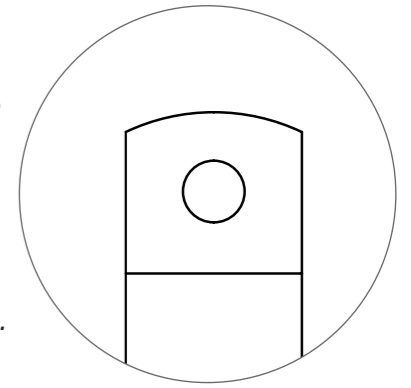
NW 50 to NW 80 (DN) are packed (PU) in cartons of 25 pipe clamps each.

DN Nominal Size	Diameter Ø in mm	Hole Spacing a	Edge Distance c	Bore Hole d1	Material mm	Order Number	
						Plain	Galvanized
50	60.3	108	18	14	40 x 6	23112	23146
65	76.1	122	18	14	40 x 6	23114	23148
80	88.9	136	18	14	40 x 6	23115	23149

NW 100 to NW 200 (DN) are packed (PU) in cartons of 10 pipe clamps each.

DN Nominal Size	Diameter Ø in mm	Hole Spacing a	Edge Distance c	Bore Hole d1	Material mm	Order Number	
						Plain	Galvanized
100	114.3	178	24	18	50 x 8	23117	23151
125	139.7	204	24	18	50 x 8	23119	23153
150	168.3	232	24	18	50 x 8	23121	23155
200	219.1	284	24	18	50 x 8	23123	23157

Form A two-piece
pipe clamps made of
S235JR – a robust
structural steel for
stable and durable
components.



NW 250 to NW 350 (DN) are supplied loose-packed (PU).

DN Nominal Size	Diameter Ø in mm	Hole Spacing a	Edge Distance c	Bore Hole d1	Material mm	Order Number	
						Plain	Galvanized
250	273	348	30	23	60 x 8	23127	23161
300	323.9	398	30	23	60 x 8	23128	23162
350	368.3	444	30	23	60 x 8	23130	23164

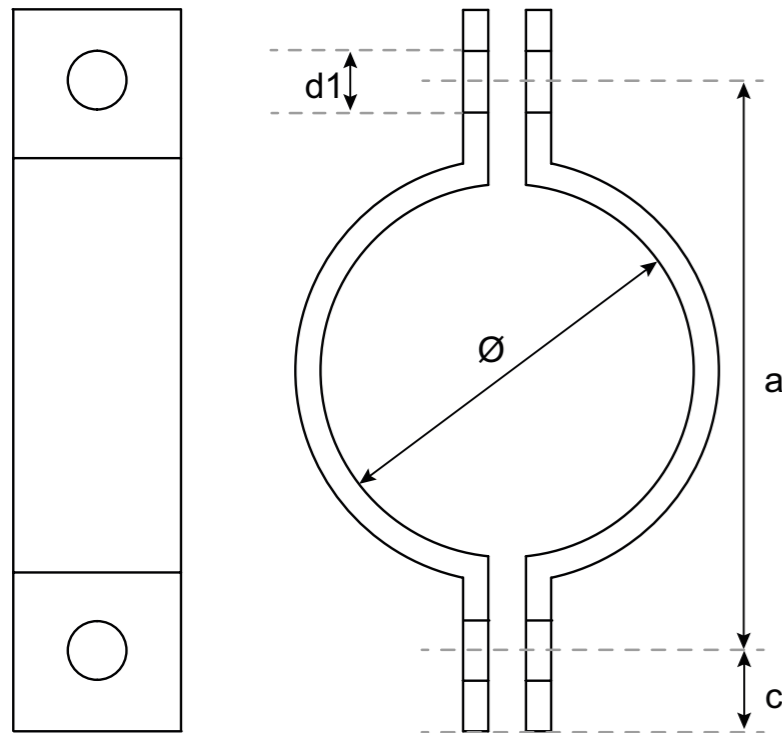
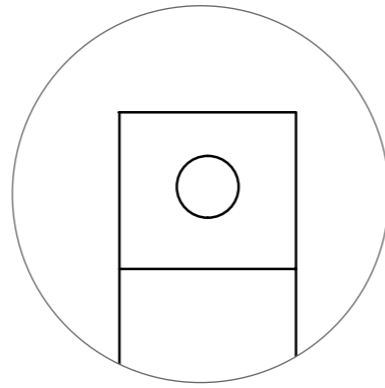
NW 400 to NW 700 (DN) are supplied loose-packed (PU).

DN Nominal Size	Diameter Ø in mm	Hole Spacing a	Edge Distance c	Bore Hole d1	Material mm	Order Number	
						Plain	Galvanized
400	406.4	498	36	27	70 x 10	23131	23165
500	508	600	36	27	70 x 10	23133	23167
600	610	710	36	27	70 x 10	23280	23283
700*	711	812	36	27	70 x 10	23281	23284

*Note: NW 700 is a custom-made item and not held in stock.

Pipe clamp brackets DIN 3567 Form A

Material no. 1.4541 (V2A, 2-piece), with straight edges, permanent nominal size marking, and barrel-deburred surface.



NW 15 to NW 200 (DN)

DN Nominal Size	Diameter Ø in mm	Hole Spacing a	Edge Distance c	Bore Hole d1	Material mm	Order Number 1.4541
15	21.3	47	10	11.5	25 x 4	66007
20	26.9	52	10	11.5	25 x 4	66009
25	33.7	72	15	11.5	30 x 5	66011
40	48.3	88	15	11.5	30 x 5	66015
50	60.3	108	18	14	40 x 6	66017
65	76.1	122	18	14	40 x 6	66018
80	88.9	136	18	14	40 x 6	66019
100	114.3	178	24	18	50 x 8	66021
150	168.3	232	24	18	50 x 8	66025
200	219.1	284	24	18	50 x 8	66029

Materials are available up to DN 200 on request.
Depending on size, packed in cartons or on pallets.

Pipe clamps – factory standards* Form A

Factory standard Bayer-8250, S235JR steel, (2-piece), with straight edges.



NW 15 to NW 500 (DN)

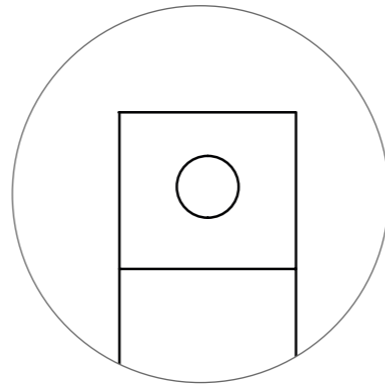
DN Nominal Size	Diameter Ø in mm	Hole Spacing a	Edge Distance c	Bore Hole d1	Material mm	Order Number S235JR
15	21.3	47	10	11.5	25 x 4	67007
20	26.9	52	10	11.5	25 x 4	67009
25	33.7	72	15	11.5	30 x 5	67011
32	42.4	82	15	11.5	30 x 5	67013
40	48.3	86	15	11.5	30 x 5	67015
50	60.3	108	13	14	40 x 6	67017
65	76.1	122	13	14	40 x 6	67018
80	88.9	136	13	14	40 x 6	67019
100	114.3	178	24	18	50 x 8	67021
125	139.7	204	24	18	50 x 8	67023
150	168.3	232	24	18	50 x 8	67025
200	219.1	284	24	18	50 x 8	67029
250	273	348	30	23	60 x 8	67031
300	323.9	398	30	23	60 x 8	67033
350	355.6	432	30	23	60 x 8	67034
400	406.4	498	36	27	70 x 10	67036
500	508	600	36	27	70 x 10	67040

*Factory standards are based on DIN designs and allow extended dimensional and design variations.

Depending on size, packed in cartons or on pallets.

Pipe clamps – factory standards Form A

Factory standard Bayer-8250, stainless steel 1.4571 (V4A, 2-piece), with straight edges.



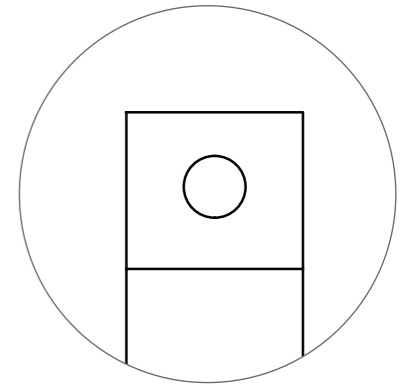
NW 15 to NW 300 (DN)

DN Nominal Size	Diameter Ø in mm	Hole Spacing a	Edge Distance c	Bore Hole d1	Material mm	Order Number 1.4571
15	21.3	47	10	11.5	25 x 4	66104
20	26.9	52	10	11.5	25 x 4	66106
25	33.7	72	15	11.5	30 x 5	66108
40	48.3	86	15	11.5	30 x 5	66115
50	60.3	108	13	14	40 x 6	66117
65	76.1	122	13	14	40 x 6	66118
80	88.9	136	13	14	40 x 6	66119
100	114.3	178	24	18	50 x 8	66121
125	139.7	204	24	18	50 x 8	66122
150	168.3	232	24	18	50 x 8	66123
200	219.1	284	24	18	50 x 8	66124
300	323.9	398	30	23	60 x 8	66126

Depending on size, packed in cartons or on pallets.

Pipe clamps – factory standards Form A

Factory standard BASF-1290, Hoechst, S235JR steel, (1-piece), with straight edges.



NW 10 to NW 700 (DN)

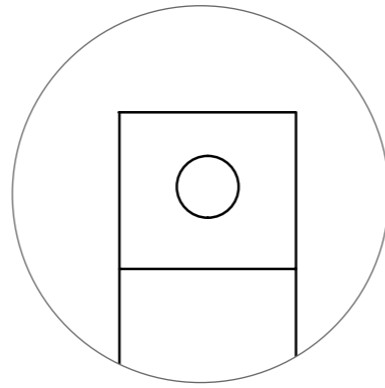
DN Nominal Size	Diameter Ø in mm	Hole Spacing a	Edge Distance c	Bore Hole d1	Material mm	Order Number S235JR
10	18	44	8	6.5	20 x 3	68105
15	21.3	52	10	9	25 x 4	68107
20	26.9	57	10	9	25 x 4	68109
25	33.7	71	13	11	30 x 5	68111
32	42.4	80	13	11	30 x 5	68113
40	48.3	86	13	11	30 x 5	68115
50	60.3	106	15	14	40 x 6	68117
65	76.1	122	15	14	40 x 6	68118
80	88.9	134	15	14	40 x 6	68119
100	114.3	168	15	14	40 x 8	68121
125	139.7	193	15	14	40 x 8	68123
150	168.3	218	15	14	40 x 8	68125
200	219.1	278	20	18	50 x 8	68129
250	273	331	20	18	50 x 8	68131
300	323.9	382	20	18	50 x 8	68133
350	355.6	414	20	18	60 x 8	68134
400	406.4	465	20	18	60 x 8	68136
500	508	577	25	22	70 x 10	68140
600	610	679	25	22	70 x 10	68142
700*	711	812	25	27	70 x 10	68146

*Note: NW 700 is a custom-made item and not held in stock.

Depending on size, packed in cartons or on pallets.

Pipe clamps – factory standards Form A

Factory standard BASF-1290, Hoechst, stainless steel 1.4541 (V2A, 1-piece), with straight edges.



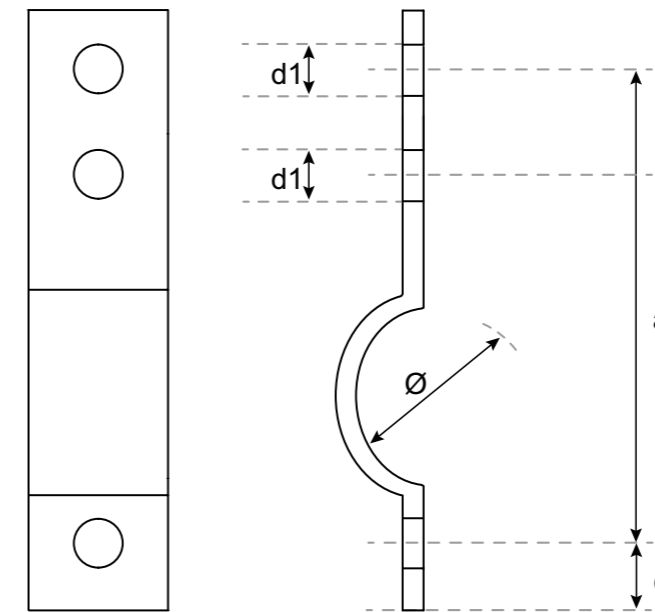
NW 15 to NW 300 (DN)

DN Nominal Size	Diameter Ø in mm	Hole Spacing a	Edge Distance c	Bore Hole d1	Material mm	Order Number 1.4541
15	21.3	52	10	9	25 x 4	66307
20	26.9	57	10	9	25 x 4	66309
25	33.7	71	13	11	30 x 5	66311
32	42.4	80	13	11	30 x 5	66313
40	48.3	86	13	11	30 x 5	66315
50	60.3	106	15	14	40 x 6	66317
65	76.1	122	15	14	40 x 6	66318
80	88.9	134	15	14	40 x 6	66319
100	114.3	168	15	14	40 x 8	66321
125	139.7	193	15	14	40 x 8	66323
150	168.3	218	15	14	40 x 8	66325
200	219.1	278	20	18	50 x 8	66329
250	273	331	20	18	50 x 8	66331
300	323.9	382	20	18	50 x 8	66333

Depending on size, packed in cartons or on pallets.

Pipe clamps – factory standards Form B

Factory standard Bayer-8250, S235JR steel, (2-piece), with straight edges.



Form B designates a version of the pipe clamp bracket with an additional hole on one side and an extended tab.

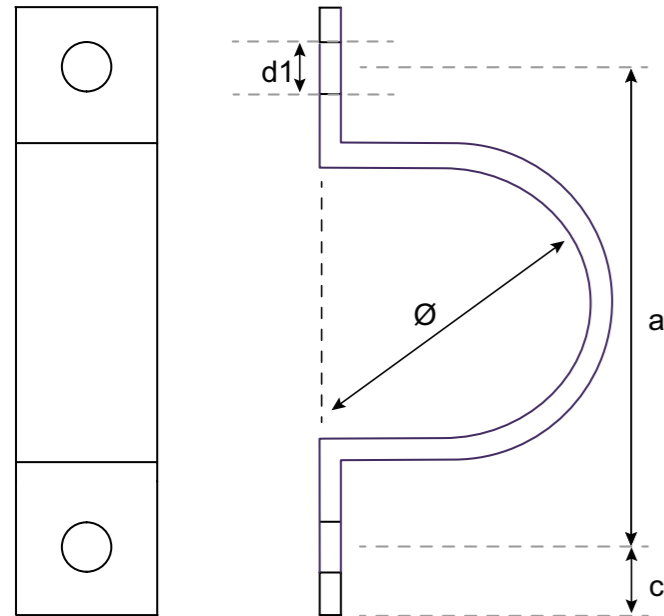
NW 10 to NW 600 (DN)

DN Nominal Size	Diameter Ø in mm	Hole Spacing a	Edge Distance c	Bore Hole d1	Material mm	Order Number S235JR
15	21.3	52	10	9	25 x 4	68207
20	26.9	57	10	9	25 x 4	68209
25	33.7	71	13	11	30 x 5	68211
32	42.4	80	13	11	30 x 5	68213
40	48.3	86	13	11	30 x 5	68215
50	60.3	106	15	14	40 x 6	68217
65	76.1	122	15	14	40 x 6	68218
80	88.9	134	15	14	40 x 6	68219
100	114.3	168	15	14	40 x 8	68221
125	139.7	193	15	14	40 x 8	68223
150	168.3	218	15	14	40 x 8	68225
200	219.1	278	20	18	50 x 8	68229
250	273	331	20	18	50 x 8	68230
300	323.9	382	20	18	50 x 8	68232
350	355.6	414	20	18	60 x 8	68234
400	406.4	465	20	18	60 x 8	68236
500	508	577	25	22	70 x 10	68240
600	610	679	25	22	70 x 10	68242

Depending on size, packed in cartons or on pallets.

Pipe clamps – factory standards Form C

Factory standard Bayer-8250, S235JR steel, (1-piece), with straight edges.



Form C is suitable for ceiling mounting, matches the respective pipe diameters, and is designed for high loads as well as temperature variations. Available in various diameters, designs, and surface finishes.

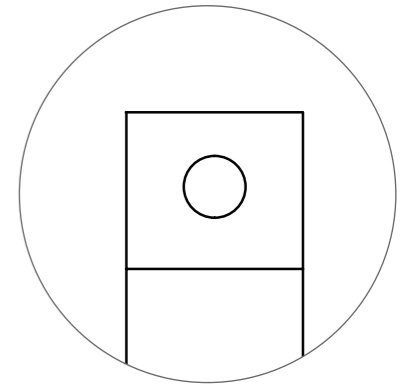
NW 10 to NW 200 (DN)

DN Nominal Size	Diameter Ø in mm	Hole Spacing a	Edge Distance c	Bore Hole d1	Material mm	Order Number S235JR
10	17.2	44	8	6.5	20 x 3	68506
15	21.3	52	10	9	25 x 4	68507
20	26.9	57	10	9	25 x 4	68509
25	33.7	71	13	11	30 x 5	68511
32	42.4	80	13	11	30 x 5	68513
40	48.3	86	13	11	30 x 5	68515
50	60.3	107	15	14	40 x 6	68517
65	76.1	122	15	14	40 x 6	68518
80	88.9	134	15	14	40 x 6	68519
100	114.3	168	15	14	40 x 8	68521
125	139.7	193	15	14	40 x 8	68523
150	168.3	218	15	14	40 x 8	68525
200	219.1	278	20	18	50 x 8	68529

Depending on size, packed in cartons or on pallets.

Pipe clamps – factory standards Form C

Factory standard Bayer-8250, S235JR steel, hot-dip galvanized, (1-piece), with straight edges.



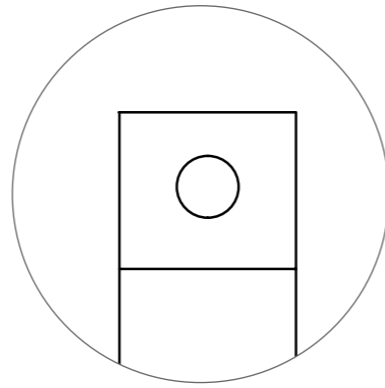
NW 10 to NW 200 (DN)

DN Nominal Size	Diameter Ø in mm	Hole Spacing a	Edge Distance c	Bore Hole d1	Material mm	Order Number S235JR, galvanized
10	17.2	44	8	6.5	20 x 3	68406
15	21.3	52	10	9	25 x 4	68407
20	26.9	57	10	9	25 x 4	68409
25	33.7	71	13	11	30 x 5	68411
32	42.4	80	13	11	30 x 5	68413
40	48.3	86	13	11	30 x 5	68415
50	60.3	107	15	14	40 x 6	68417
65	76.1	122	15	14	40 x 6	68418
80	88.9	134	15	14	40 x 6	68419
100	114.3	168	15	14	40 x 8	68421
125	139.7	193	15	14	40 x 8	68423
150	168.3	218	15	14	40 x 8	68425
200	219.1	278	20	18	50 x 8	68429

Depending on size, packed in cartons or on pallets.

Pipe clamps – factory standards Form C

Factory standard Bayer-8250, stainless steel 1.4541
(V2A, 1-piece), with straight edges



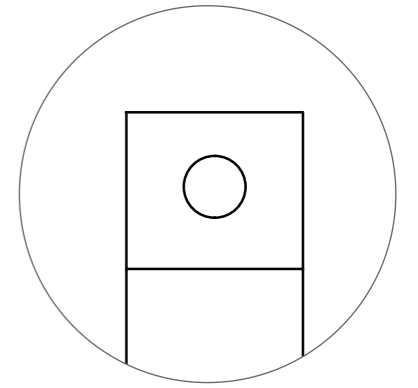
NW 15 to NW 200 (DN)

DN Nominal Size	Diameter Ø in mm	Hole Spacing a	Edge Distance c	Bore Hole d1	Material mm	Order Number 1.4541
15	21.3	52	10	9	25 x 4	66407
20	26.9	57	10	9	25 x 4	66409
25	33.7	71	13	11	30 x 5	66411
32	42.4	80	13	11	30 x 5	66413
40	48.3	86	13	11	30 x 5	66415
50	60.3	107	15	14	40 x 6	66417
65	76.1	122	15	14	40 x 6	66418
80	88.9	134	15	14	40 x 6	66419
100	114.3	168	15	14	40 x 8	66421
125	139.7	193	15	14	40 x 8	66423
150	168.3	218	15	14	40 x 8	66425
200	219.1	278	20	18	50 x 8	66429

Depending on size, packed in cartons or on pallets.

Pipe clamps – factory standards Form C

Factory standard Bayer-8250, stainless steel 1.4571,
pickled (V4A, 1-piece), with straight edges.



NW 15 to NW 200 (DN)

DN Nominal Size	Diameter Ø in mm	Hole Spacing a	Edge Distance c	Bore Hole d1	Material mm	Order Number 1.4571, pickled
15	21.3	52	10	9	25 x 4	66407B
20	26.9	57	10	9	25 x 4	66409B
25	33.7	71	13	11	30 x 5	66411B
32	42.4	80	13	11	30 x 5	66413B
40	48.3	86	13	11	30 x 5	66415B
50	60.3	107	15	14	40 x 6	66417B
65	76.1	122	15	14	40 x 6	66418B
80	88.9	134	15	14	40 x 6	66419B
100	114.3	168	15	14	40 x 8	66421B
125	139.7	193	15	14	40 x 8	66423B
150	168.3	218	15	14	40 x 8	66425B
200	219.1	278	20	18	50 x 8	66429B

Depending on size, packed in cartons or on pallets.

Notes

Technical Information



General Information

All information reflects the current status of our production and applicable standards.

Technical changes, special dimensions, or alternative materials are available on request. Illustrations and dimensions are for reference only and non-binding. The technical specifications valid at the time of order are decisive.

Installation Instructions

- ▣ Install pipe clamps properly
- ▣ Tighten screws evenly, do not overtighten
- ▣ Observe spacing to walls and adjacent clamps

Maintenance

- ▣ Stainless steel pipe clamps are low-maintenance; check galvanized versions for corrosion
- ▣ Regularly check screws and fastenings for secure tightness

Special Options

- ▣ Custom dimensions up to DN 200 available
- ▣ Alternative materials and surface finishes available on request
- ▣ Customer-specific markings possible

Standards

- ▣ DIN 3567, factory standard Bayer-8250
- ▣ Illustrations in this brochure are for guidance only – the actual dimensions are decisive

Contact

Eckermann GmbH
Email: info@eckermann.de
Phone: +49 6082 671

All information in this brochure reflects the current status of our production and the specified standards.

Notes

For custom dimensions, articles, or project-specific information

Grid area for notes.

Notes

For custom dimensions, articles, or project-specific information

A large grid of small dots, intended for taking notes. The grid consists of approximately 30 columns and 40 rows of dots, providing a structured space for writing.

