



# ZURFLÜH-FELLER



**The system designer and manufacturer  
of roller shutter components  
since 1920**

[www.zurfluh-feller.fr](http://www.zurfluh-feller.fr)

**Designing, developing and manufacturing systems and solutions for roller shutters since 1920, ZURFLÜH-FELLER is today the leader in France for roller shutter components.**

ZURFLÜH-FELLER is positioned as a major partner to the exterior openings industry: shutter manufacturers, PVC profilers, PVC & aluminium designers and motor manufacturers.

As a major innovator in shutter technology, ZURFLÜH-FELLER continuously offers its customers new products to satisfy the 3 requirements they need most:

**Easy to fit  
Effective  
Outstanding quality**

From standard shutter components to sub-assemblies, full assemblies and tailored solutions, ZURFLÜH-FELLER brings its customers every day the best technology for a personalized solution.

**OUR LOCATIONS**

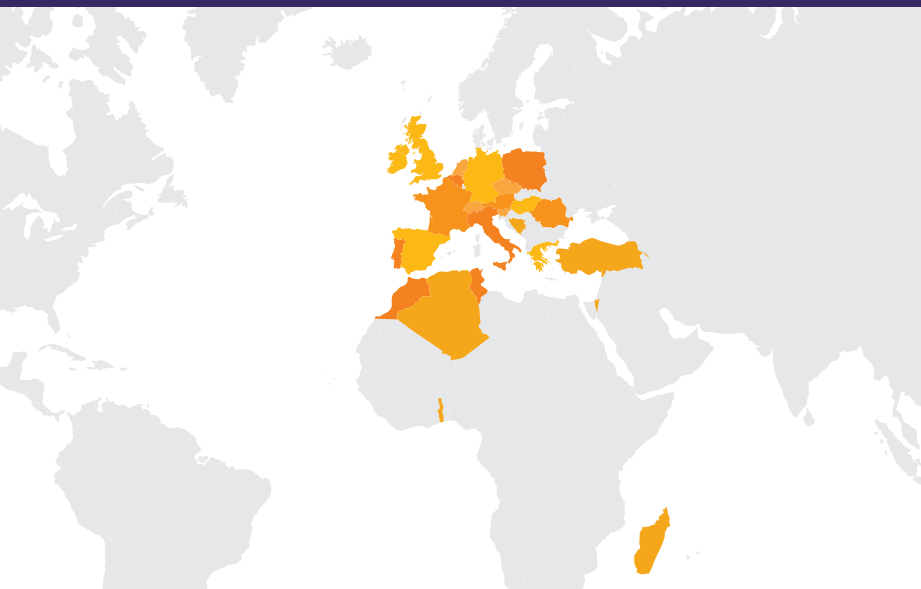
- 1. Autechaux-Roide/Noirefontaine
- 2. Poland

**OUR PARTNERS**

- 3. Marseille
- 4. Germany
- 5. Romania



**TAILORED SERVICE,  
INDUSTRIAL STRENGTH**



**A STRONG  
INTERNATIONAL  
PRESENCE**



€62 million turnover of which 20% is exported (\*in 2017)



Over 400 employees



29 000 m<sup>2</sup> dedicated to production



20 000 orders a year



10% of turnover invested every year in industrial tooling and R&D



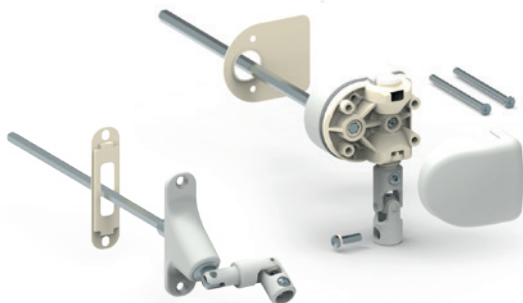
4500 items



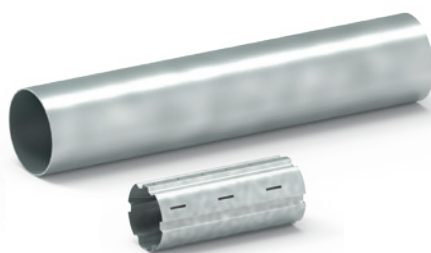
## AN INNOVATIVE RANGE FOR **ROLLER SHUTTERS AND ROLLER DOORS**

Product range designed to meet new regulations

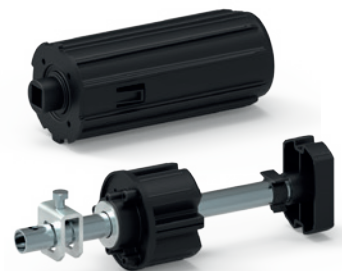
### MANUAL OPERATION



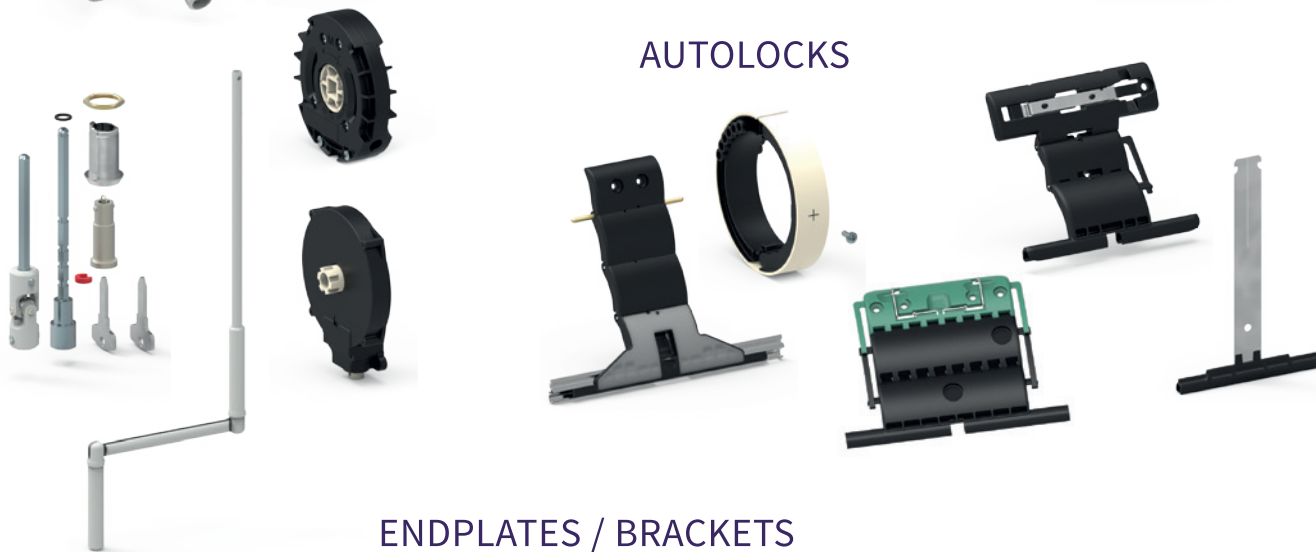
### TUBE



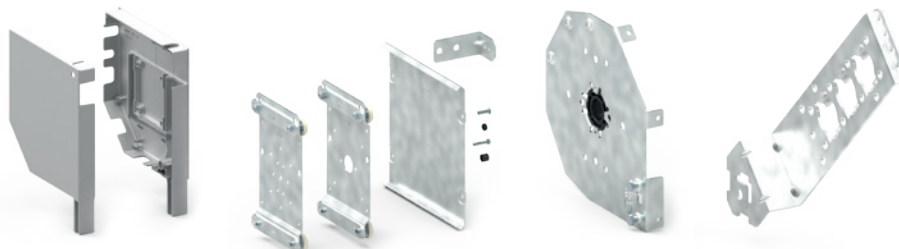
### CAPS

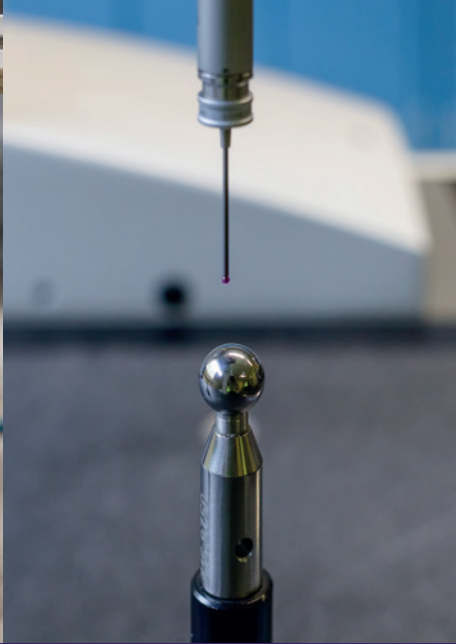


### AUTOLOCKS



### ENDPLATES / BRACKETS





INNOVATION MADE  
POSSIBLE BY **HIGH-LEVEL  
KNOW-HOW**

TOTALLY INTEGRATED PRODUCTION BASED ON  
**6 COMPLEMENTARY SKILLS**



**MACHINING AND SCREW  
MACHINING**

**25 millions**  
machined components per year



**PROFILING**

**2500 tons** of steel profiled a year  
**3000 km** tube produced a year



**PLASTIC INJECTION**

**2500 tons** of plastic injected  
**110 millions** parts produced a year



**CUTTING OUT  
AND STAMPING**

**18 millions** parts produced a year  
Over **1500 items**



**ASSEMBLING**

Assembly robots  
**10 millions** parts mounted a year



**SURFACE TREATMENT**

Zinc coating - Phosphatation -  
Passivation - Painting  
**Zero** environmental release



# PROVIDING SOLUTIONS, THE POWER OF R&D

## INNOVATION IS AT THE HEART OF ZURFLÜH-FELLER'S DEVELOPMENT POLICY

- ▶ A department of 22 people for product development and industrialization.
- ▶ ZURFLÜH-FELLER has its own test facilities to guarantee product certification.
- ▶ Innovation policy :
  - Competitive intelligence (competition, standards, regulations, certification)
  - Intellectual property
  - Prototyping
  - Test labs
  - Metrology

## QUALITY: TOTAL COMMITMENT

ZURFLÜH-FELLER quality relies on :

- ▶ During development : process/ product certification
- ▶ During production : a product oversight schedule
- ▶ When marketing : immediate response and resolution of quality issues

Right from the design stage, we work closely with our customers to incorporate upcoming standards and facilitate product certification

## TESTING AND METROLOGY LAB

- ▶ 200 tests conducted a year
- ▶ 280 metrology requests processed in 2017



**70 ACTIVE PATENTS**



## A SALES TEAM AT YOUR DISPOSAL

- In France and abroad
- Technical advices tailored to our customers
- ZURFLÜH-FELLER services + :
  - Optimized logistics : we ship within 7 working days after your order
  - Full technical partnership ranging from advice to co-development

## A NEW WEBSITE

- Research product information
- Consult our catalogue
- Download our marketing and technical brochures
- Order online
- Contact your local sales representative



# ZURFLÜH-FELLER

11 Rue des Herbiers - 25190 Noirefontaine - France - Tél. : +33 (0)3 81 99 33 00 - Fax : +33 (0)3 81 99 33 40 - std@zurfluh-feller.com

[www.zurfluh-feller.fr](http://www.zurfluh-feller.fr)